

(Normal condition)

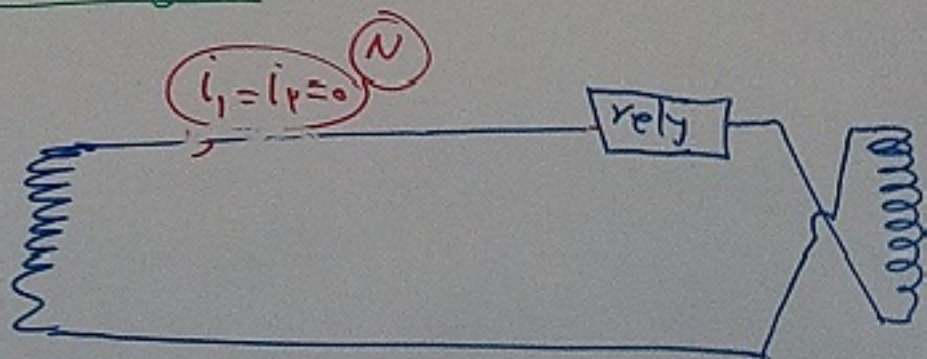
problem statement:

line length $\uparrow \Rightarrow R \uparrow \Rightarrow$ power loss $\uparrow \Rightarrow$

{ CT burden \uparrow (problem)
error

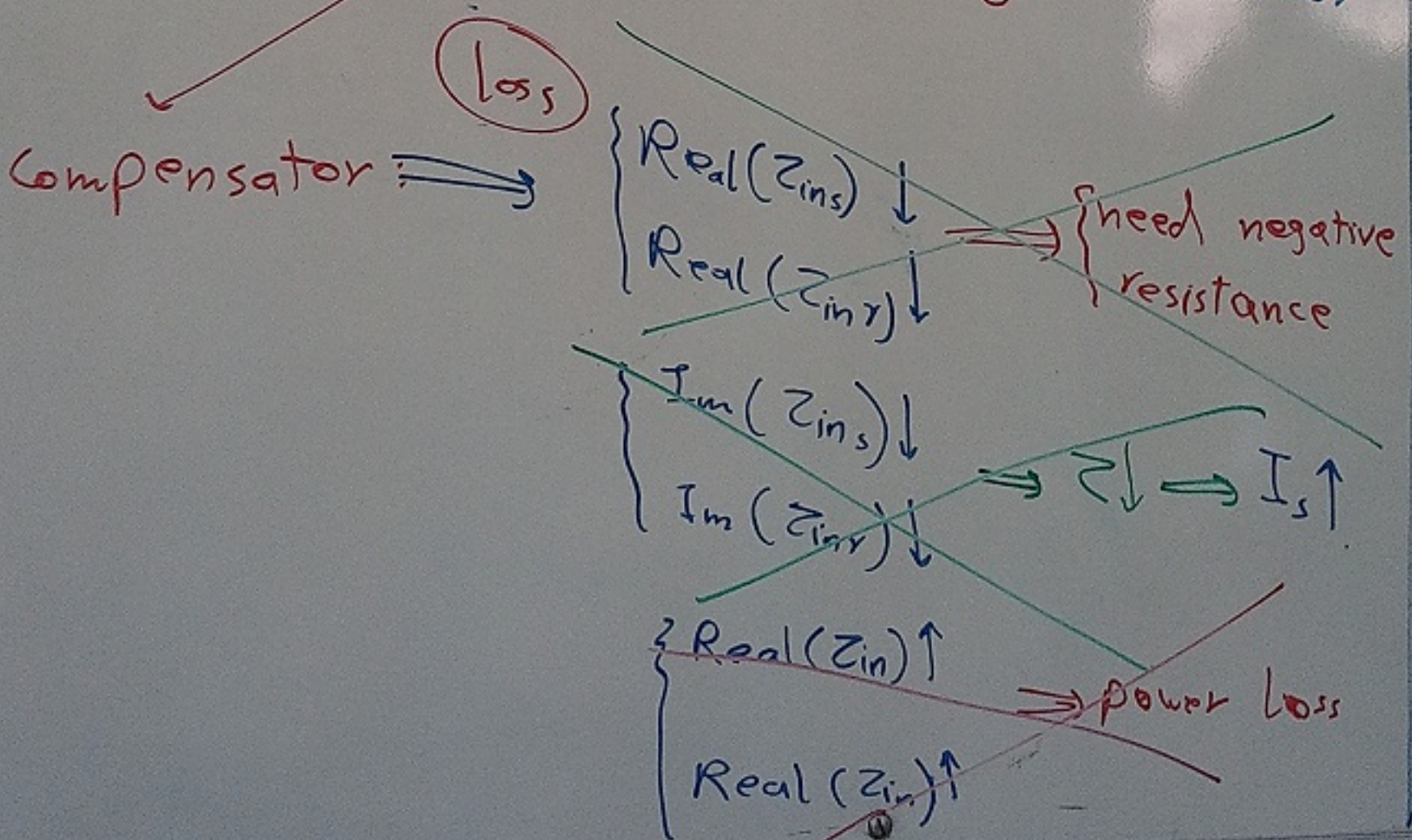
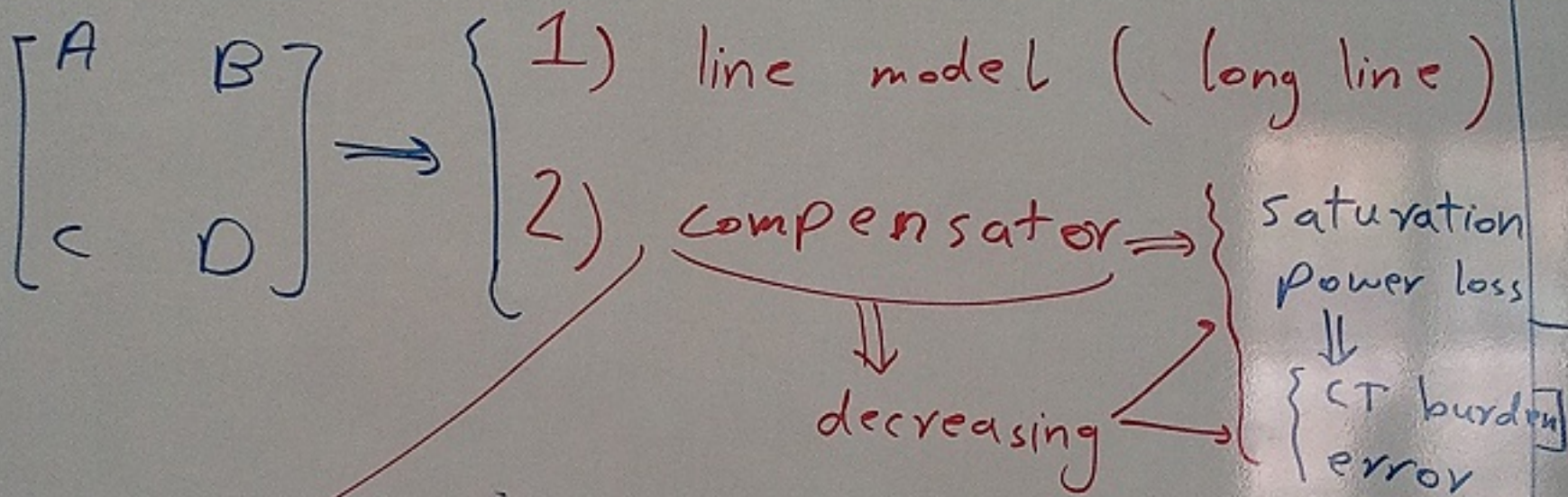
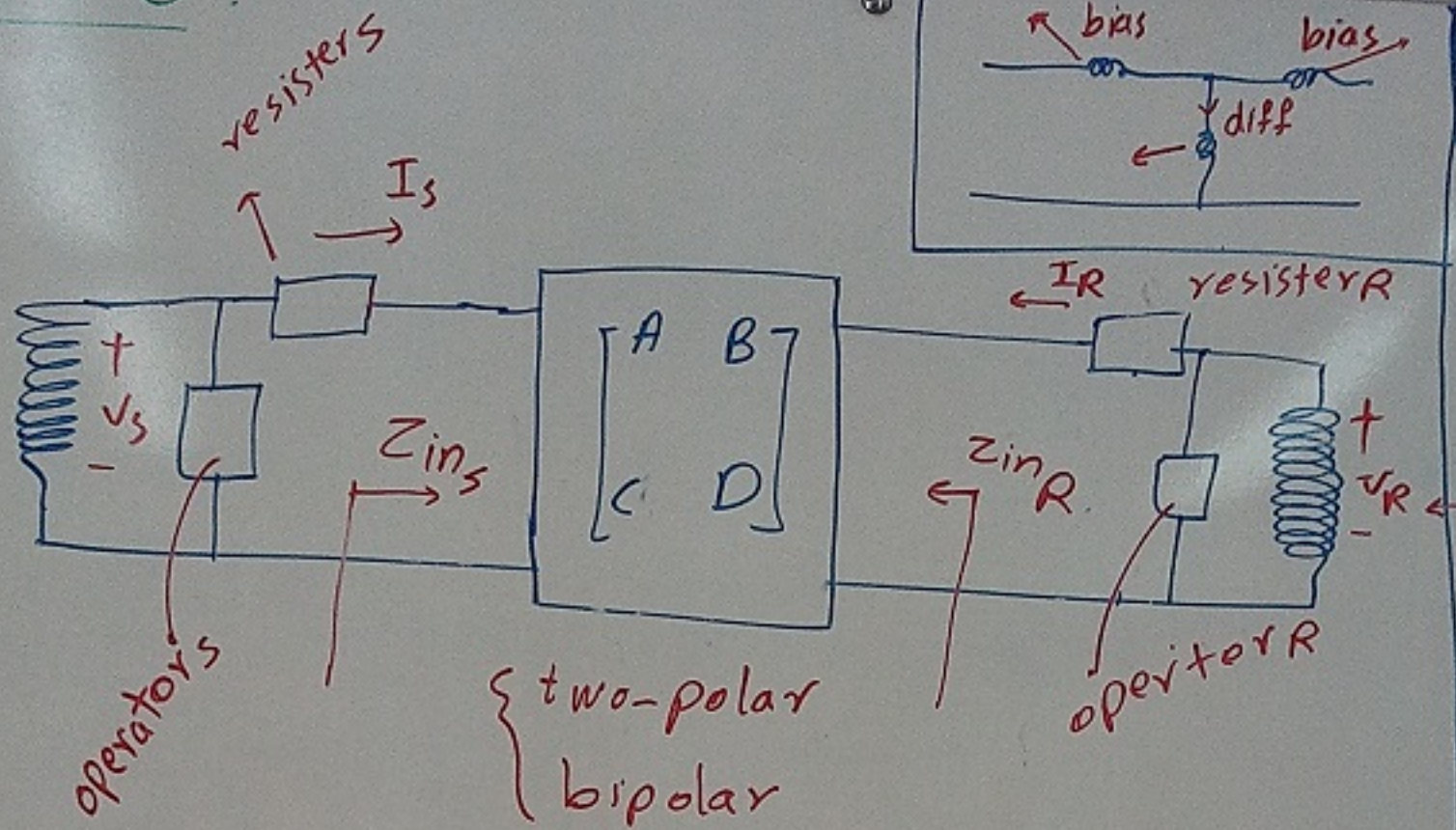
Solution \Rightarrow ①

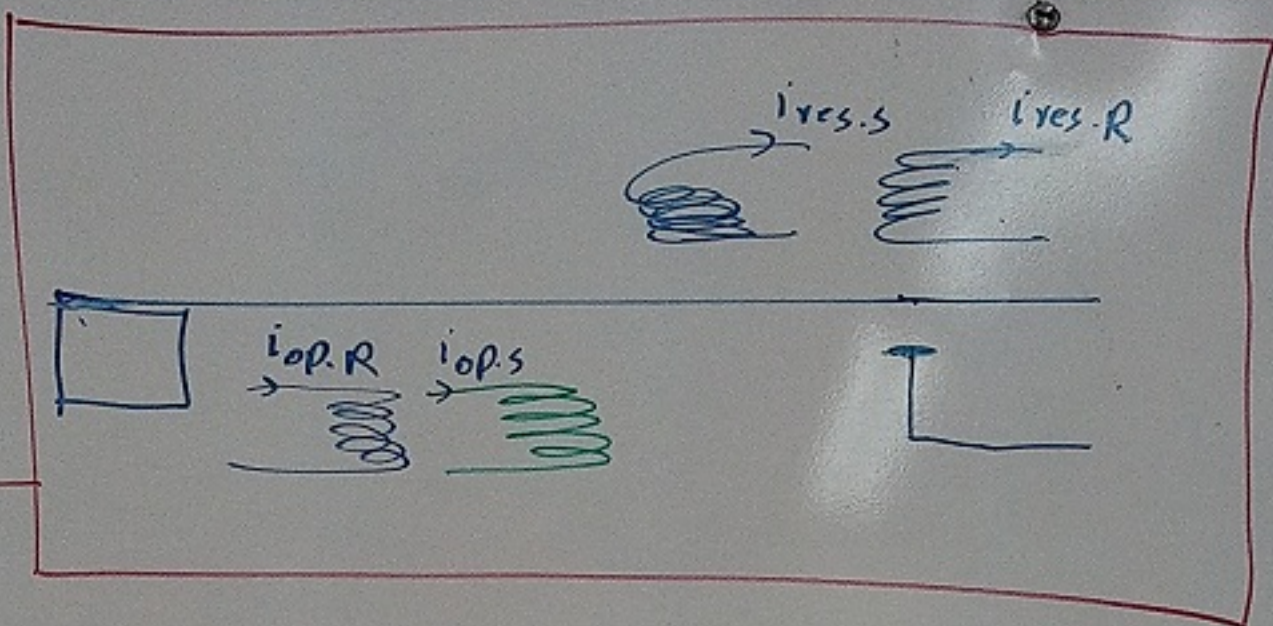
connection type



{ load current \Rightarrow no current in secondary \Rightarrow
cause saturation

Solution 2





$$\left. \begin{array}{l} \text{Im}(Z_{in}) \uparrow \\ \text{Im}(Z_{ins}) \uparrow \end{array} \right\} \Rightarrow Z \uparrow \Rightarrow \begin{array}{l} I_S \\ I_R \end{array} \downarrow$$

add capacitance in parallel

PH